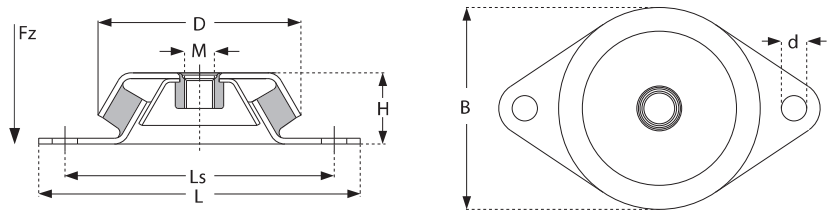


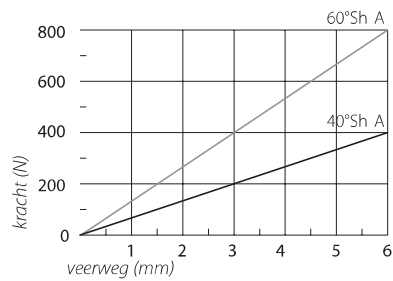
# Doorslagbeveiligde machinevoeten type HD High Deflection

Art.Code	L (mm)	Ls (mm)	D (mm)	H (mm)	B (mm)	M (mm)	d (mm)	Shore A
HD4040M10	110	88	64	36	64	M10i	9	40°
HD4060M10	110	88	64	36	64	M10i	9	60°

- L* = lengte
- Ls* = hartafstand bevestigingsgaten
- D* = diameter
- H* = hoogte
- B* = breedte
- M* = schroefdraad
- d* = boring
- Shore A* = hardheid



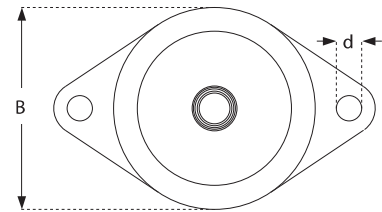
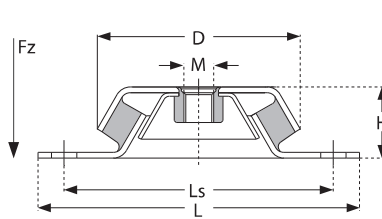
Belasting Fz



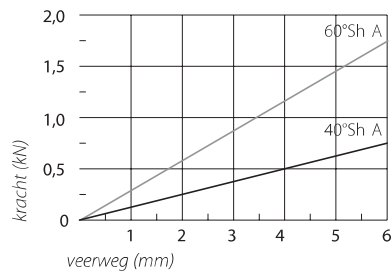
# Doorslagbeveiligde machinevoeten type HD High Deflection

Art.Code	L (mm)	Ls (mm)	D (mm)	H (mm)	B (mm)	M (mm)	d (mm)	Shore A
HD6040M12	120	100	64	36	64	M12i	11	40°
HD6060M12	120	100	64	36	64	M12i	11	60°

- L* = lengte
- Ls* = hartafstand bevestigingsgaten
- D* = diameter
- H* = hoogte
- B* = breedte
- M* = schroefdraad
- d* = boring
- Shore A* = hardheid



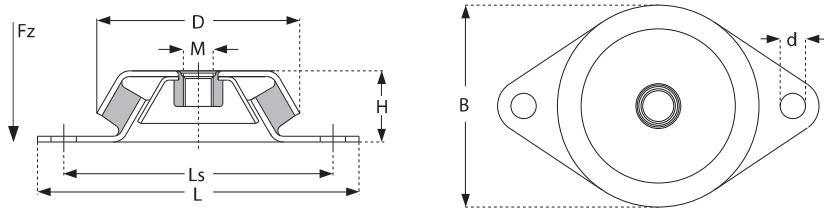
### Belasting Fz



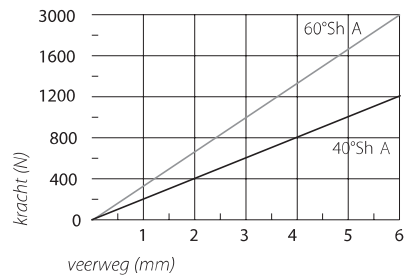
# Doorslagbeveiligde machinevoeten type HD High Deflection

Art.Code	L (mm)	Ls (mm)	D (mm)	H (mm)	B (mm)	M (mm)	d (mm)	Shore A
HD12540M12	135	110	84	36	84	M12i	11	40°
HD12560M12	135	110	84	36	84	M12i	11	60°

- L* = lengte
- Ls* = hartafstand bevestigingsgaten
- D* = diameter
- H* = hoogte
- B* = breedte
- M* = schroefdraad
- d* = boring
- Shore A* = hardheid



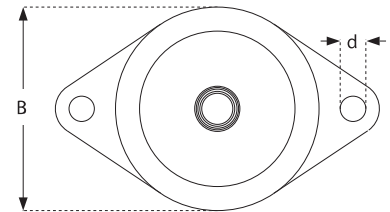
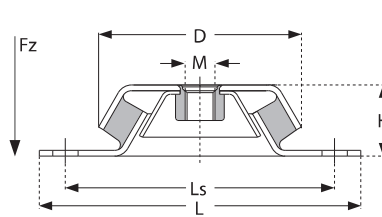
## Belasting Fz



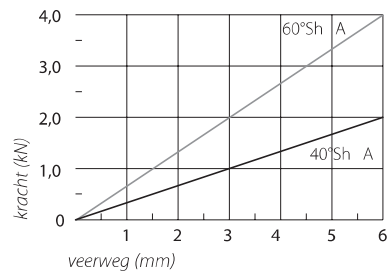
# Doorslagbeveiligde machinevoeten type HD High Deflection

Art.Code	L (mm)	Ls (mm)	D (mm)	H (mm)	B (mm)	M (mm)	d (mm)	Shore A
HD35040M12	175	140	110	42	110	M12i	14	40°
HD35040M16	175	140	110	42	110	M16i	14	40°
HD35060M12	175	140	110	42	110	M12i	14	60°
HD35060M16	175	140	110	42	110	M16i	14	60°

- L* = lengte
- Ls* = hartafstand bevestigingsgaten
- D* = diameter
- H* = hoogte
- B* = breedte
- M* = schroefdraad
- d* = boring
- Shore A* = hardheid



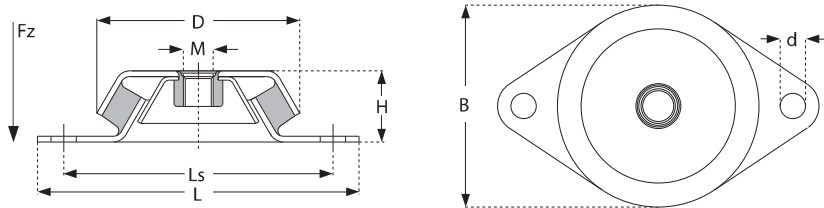
## Belasting Fz



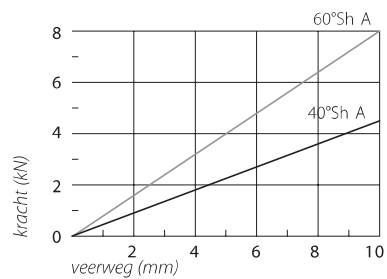
# Doorslagbeveiligde machinevoeten type HD High Deflection

Art.Code	L (mm)	Ls (mm)	D (mm)	H (mm)	B (mm)	M (mm)	d (mm)	Shore A
HD80040M16	216	182	155	55	155	M16i	14	40°
HD80060M16	216	182	155	55	155	M16i	14	60°

- L* = lengte
- Ls* = hartafstand bevestigingsgaten
- D* = diameter
- H* = hoogte
- B* = breedte
- M* = schroefdraad
- d* = boring
- Shore A* = hardheid



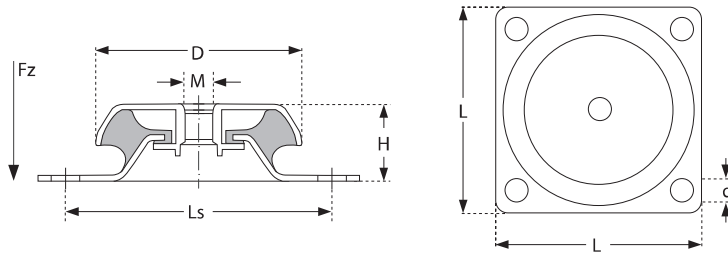
## Belasting Fz



# Doorslagbeveiligde machinevoeten type HD High Deflection

Art.Code	L (mm)	Ls (mm)	D (mm)	H (mm)	M (mm)	d (mm)	Shore A
HD150040M20	180	146	180	85	M20i	14	40°
HD150060M20	180	146	180	85	M20i	14	60°
HD150070M20	180	146	180	85	M20i	14	70°

- L* = lengte
- Ls* = hartafstand bevestigingsgaten
- D* = diameter
- H* = hoogte
- M* = schroefdraad
- d* = boring
- Shore A* = hardheid



Belasting Fz

